

# AN ADVENTURE IN TIME

DO YOU EVER HAVE DÉJÀ VU?



[WWW.PERACALS.COM](http://WWW.PERACALS.COM)



# A TIME-TRAVEL ROMANCE

*'Do you ever have deja vu?  
All the time.'*

**E**mily, a young woman disillusioned with the modern world, meets the enigmatic Professor Wells who helps her travel back in time to the idyllic pre-war Oxford of 1914 where she falls in love with a young student, Alex.

Returning to her own time, Emily discovers that Alex dies in World War One. Despite the danger, she decides to return to 1914 to save him.

## PRODUCTION DETAILS

**TITLE:** *An Adventure in Time*

**GENRE:** Romance/Adventure/Sci-Fi/Time-Travel

**PRODUCER:** Nigel Woole (*Tar/Gladiator 2/G.I. Jane*)

**WRITER/DIRECTOR:** Jason Fité (*Daemon Mind//Mea Culpa*)

**BUDGET:** \$10.2M approx.

**LOCATIONS:** London, Oxford, UK

**REFERENCE POINTS:** *Midnight in Paris/ Alice in Wonderland/ Somewhere in Time/About Time/Picnic at Hanging Rock*

*'It is infinitely ironic that I find it easier to solve the mysteries of the cosmos than I do to operate a simple modern-day vending-machine.'*

*Professor Wells*



# PRINCIPAL SELLING POINTS

1. **The Script** won Best Period Screenplay, Monaco Angel Film Awards
2. **Cast:** We are attaching a mix of well-established, named acting talent and new, up and coming actors.



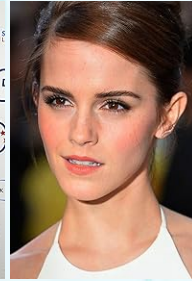
Mark Rylance



Emelia Clarke



Jason Isaacs



Emma Watson



Richard E. Grant



Hakeem Kae-Kazim



Eva Green



Dua Lipa



Hugh Laurie



Keira Knightley



Sean Young



Kevin Sorbo

**3: Our Team:** We have assembled a highly experienced and passionate team to bring this film to life including...

- Multi-award-winning novelist, writer and filmmaker Jason Fité, '*Daemon Mind*' '*Mea Culpa*' '*Through A Dark Mirror*', '*Strangers and Neighbours*', '*Ghosts of the Wasteland*'
- Producer, Nigel Wooll whose many years of film-producing include '*Gladiator 2*' (Unit Production Manager), '*Tar* (E.P.)', '*G.I. Jane*, (Co-Prod) "*Willow*' (Producer)
- Jemima McWilliams (McWilliams Casting), one of the Casting Agents on James Bond , '*No Time to Die*'.
- Executive Producers - Luke Adams, Eileen Von Skopnik and Ajay Nayyar

**4: Saleability:** Our main target audience is female (15-35) which, in the last few years, has proved to be a very substantial and committed audience which has driven the box office success of such films as *Barbie* (\$1.44B) , *Beetlejuice Beetlejuice* (\$451M) , *Taylor Swift The Eras Tour* (\$262M), *It Ends With Us* (\$350M) and *Wicked* (\$359M).

Our film is strongly female led and it will also connect to a wider audience due to its period drama and sci-fi elements. It will also be popular in international territories due to the universality of its themes ,and also because the film's 'Britishness' has traditionally been a strong attraction for overseas markets.

**5: Franchise and intellectual property (IP)** '*An Adventure in Time*' is intended to be the first in a series of films. The second film ('*Future Past*') has been outlined. As a time-travel series the story-telling possibilities are virtually limitless. '*The Terminator*' and '*Back to the Future*' were both initially conceived as stand-alone films, and then went on to become extremely successful franchises. '*An Adventure in Time*' has similar potential to become an evolving franchise thus generating revenue for many years to come.



# COMPARABLES



**The Butterfly Effect (2004)**

**Budget \$13,000,000**

**Opening w/end \$17,100**

**Gross (World) \$96,822,**

**Profit yield 644%**



**Primer (2004)**

**Budget \$7'000**

**Opening weekend \$28,162**

**Gross (World) \$545,436**

**Profit yield +7964%**



**Midnight in Paris (2011)**

**Budget \$17'000'000**

**Opening weekend \$599,003**

**Gross (World) \$151,672**

**Profit yield +794%**



**Another Earth (2011)**

**Budget \$100,000**

**Opening weekend \$77,740**

**Gross (World) \$1,938,**

**Profit yield +1233%**



**Chronicle (2011)**

**Budget \$12,000,000**

**Opening weekend \$22,004**

**Gross (World) \$126,636**

**Profit yield +950%**



**Safety Not Guaranteed**

**(2010) Budget - \$750,000**

**Opening weekend \$97,762**

**Gross (World) \$4,424,**

**Profit yield +500%**



# STORY SYNOPSIS

The story follows Emily, a troubled university student in the present day, who meets the eccentric Professor Wells, a physicist researching time travel. Struggling with unsettling visions and emotional turmoil, Emily learns that the professor has created a time portal. Intrigued, she uses the portal and finds herself transported back to 1914, just before the outbreak of World War I.

In the past, Emily encounters Alex Chesham, a charming young man from 1914, with whom she forms an unexpected bond. As they grow closer, Emily becomes torn between the two timelines, while also trying to understand her place in this strange journey through time. However, the dangers of time travel and the mysterious effects it has on her health begin to loom, leading her to question the consequences of her actions across history.

This film explores themes of fate, love, and the philosophical implications of altering time.





# CHARACTERS

## **EMILY PORCH** Female, early 20s

A young student reading Ancient History at Oxford. She is fiercely intelligent and academically brilliant, but has suffered a mental break-down, and been diagnosed as a potential schizophrenic. She has apocalyptic visions which cause her to question her sanity. She feels lost and displaced in the modern world and yearns to escape into the past.

*'I don't think they are dreams, or even nightmares.  
They are more like ... visions.'*

## **ALEX CHESHAM** Male, early 20s

An Oxford student in 1914. Idealistic, adventurous and determined to escape the shackles of his family's military tradition. Alex has always believed that his fate is to escape from traditional life, and when he meets Emily, he is convinced that she is the key to his destiny.

*'I want to have adventures. I want to live.'*

## **PROFESSOR WELLS** Male, 60s

An almost archetypal eccentric Professor. Has taught at Oxford for over fifty years, but has been increasingly marginalised because of the strangeness of his theories. He uses his eccentric persona to keep the rest of the world at bay.

*'Time exists because it has never not existed.'*

## **DOCTOR CAXTON** Female 50s

A university psychologist treating Emily, but her real role and identity are a mystery. She is compassionate and idealistic, but manipulative, and is determined for Emily not to discover the true nature of her visions.

## **DOCTOR SOLOMON** Male 50s

A colleague of Doctor Caxton who is willing to risk Emily's health and sanity. He has a playful demeanor but is also devious and his ultimate motivation remains unknown.

It is hinted that Doctor Caxton and Doctor Solomon are part of a mission to maintain the integrity of the time-lines.



## T.E. LAWRENCE

Male, mid 20s

One of the most charismatic and enigmatic characters of the period, we meet him on the cusp of greatness. He is shy, but friendly and courteous with a great thirst for knowledge and adventure.

*'I shall see you in far-off places!'*



## MATA HARI

Female, late 30s

One of the most infamous and extraordinary women of her time. An exotic dancer, courtesan and spy with an unrivalled lust for life and the daring to challenge the rigid patriarchal system of her age.

*'Life is nothing. Death is nothing. All is illusion.'*





# THEMES

This is fundamentally a love story with Emily and Alex having to overcome an almost insurmountable obstacle – time itself. There are hints throughout the story that their romance is entwined with a much greater story – that of human history, and that they may represent archetypal lovers or a proto Adam and Eve.

**Eternal return or Eternal Recurrence** - a concept which was defined by Nietzsche, though its origins can be traced back to antiquity. It suggests that time is essentially cyclical, and that existence is endlessly repeated. This ties in with the ideas of fate and predestination which occur throughout the story and explains the instances of déjà vu which the main characters experience.

It is also one of the reasons why Emily and Alex feel destined to be together. The theme is expressed in the paradoxical note – ‘Send Emily back’.

**Out of Time** - Each of the principal characters feels disconnected from the world in which they live. Emily increasingly feels the desire to escape modern society, Alex feels trapped by the rigid life prescribed to him by Edwardian society and the Professor feels obsolete in the modern world.

T.E. Lawrence was obsessed with the crusades and the medieval world, and Mata Hari defied the restrictive conventions of her time by reinventing herself as an exotic figure. They are all characters yearning to be something more than their world expects them to be.



# CONTACT

## PERACALS PRODUCTIONS

### Jason Fité

Mobile: + 44 (0) 7943742057

Email: [jason@peracals.com](mailto:jason@peracals.com)

### Luke Adams

Mobile: +44 (0) 7546537709

Email: [luke@peracals.com](mailto:luke@peracals.com)

### Ajay Nayyar

Mobile: +44 (0)771 696 4634

Email: [ajay@khandoentertainment.com](mailto:ajay@khandoentertainment.com)

[www.peracals.com](http://www.peracals.com)

[info@peracals.com](mailto:info@peracals.com)

PERACALS

*'Imagine, if you can, the very beginning of time - an infinitude of nothingness and then, suddenly, existence flickered into being, and the cosmic ballet finally commenced.'*